



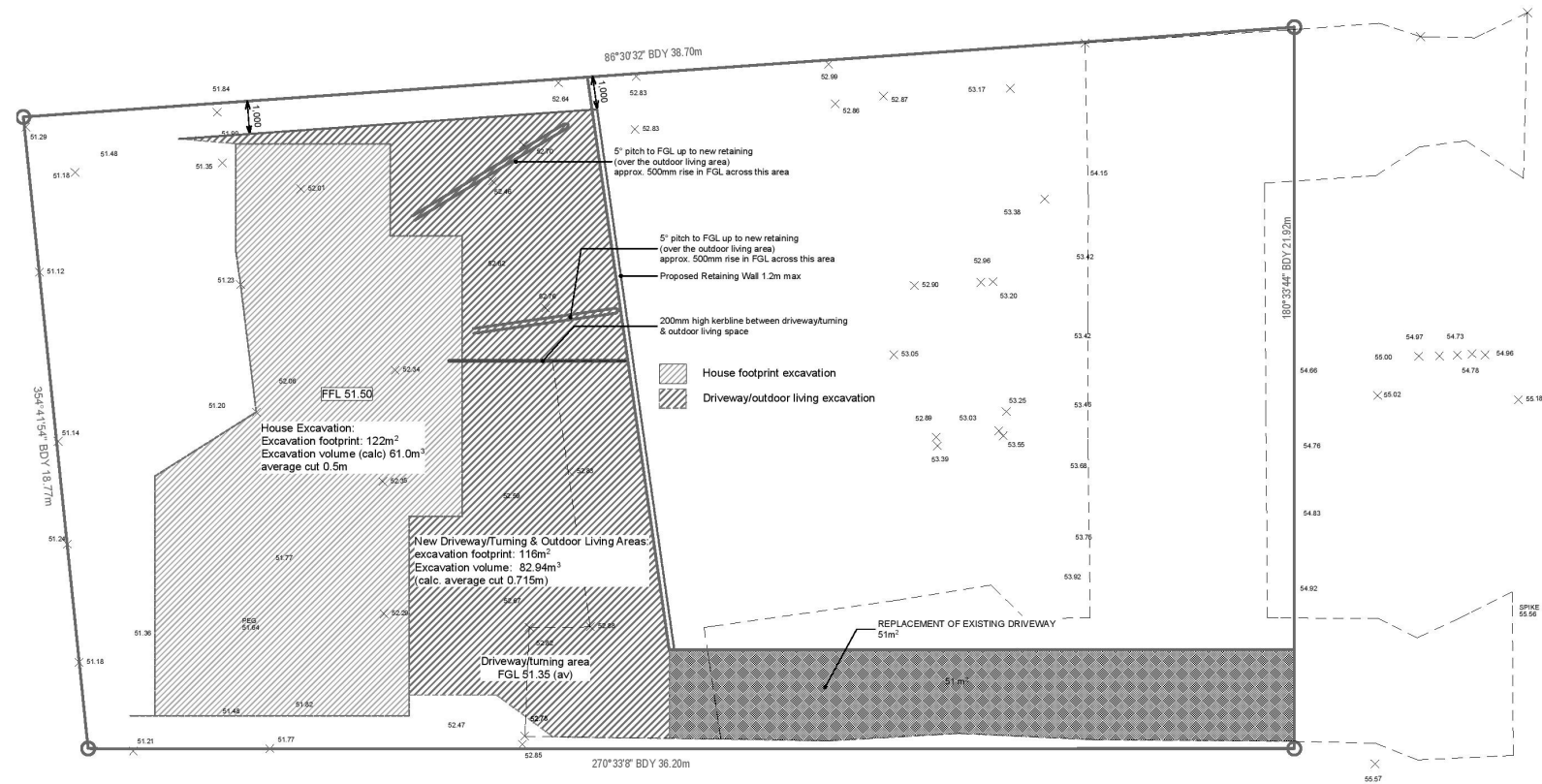
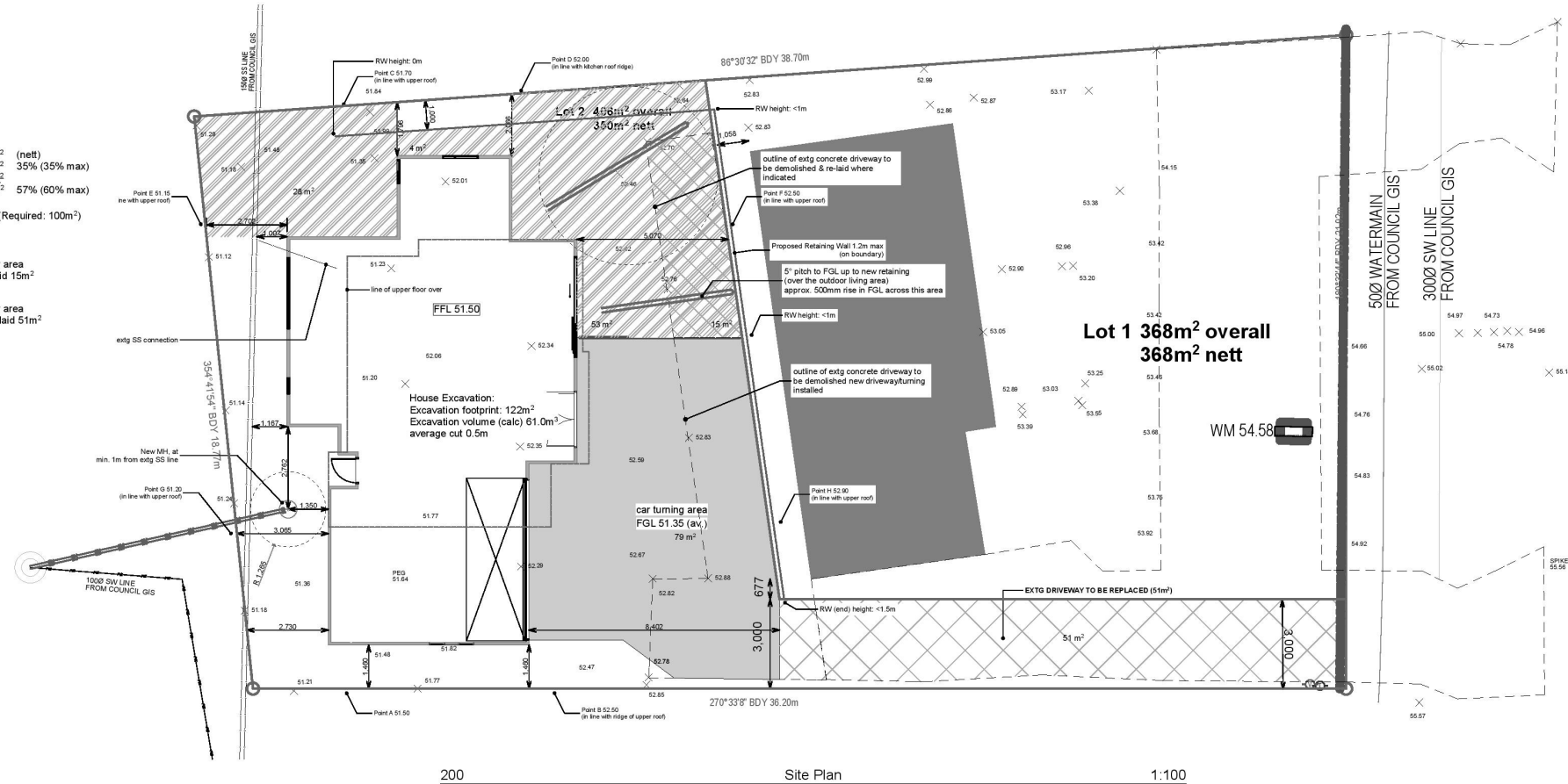
SITE AREA: 360.00m² (nett)
BUILDING FOOTPRINT: 125.00m² 35% (35% max)
DRIVEWAY: 80.00m²
TOTAL (imper. of nett area) 205.00m² 57% (60% max)

Living court
(northwest & northeast yards)
25m² per bedroom required

- Existing concrete driveway area
to be removed and lawn laid 15m²
- Existing concrete driveway area
removed & new driveway laid 51m²



ELEVATIONS

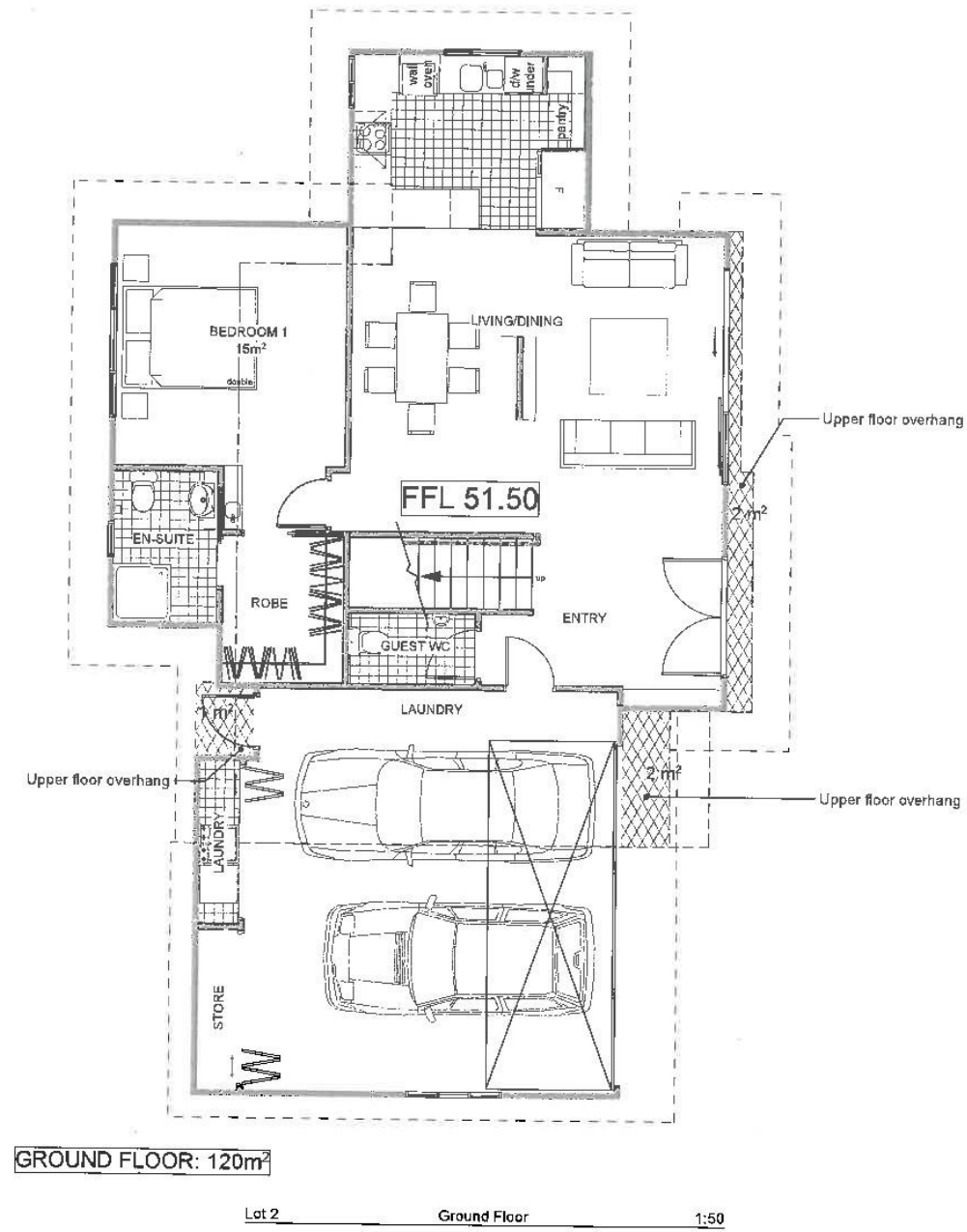


PROJECT

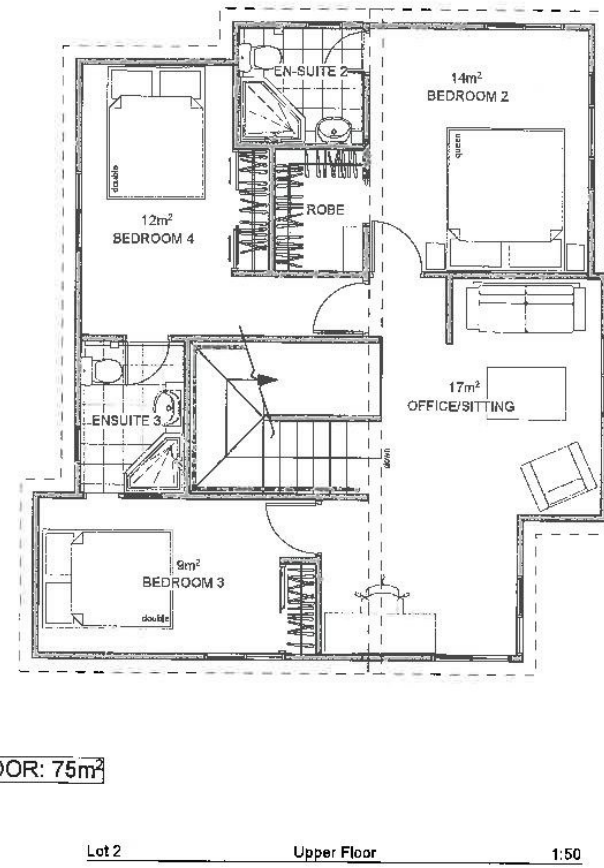
New House to Lot 2 of
2-Lot Subdivision
at 61 Simpson Road, Ranui
Milano International (2005) Ltd

SHEET

Site Plan

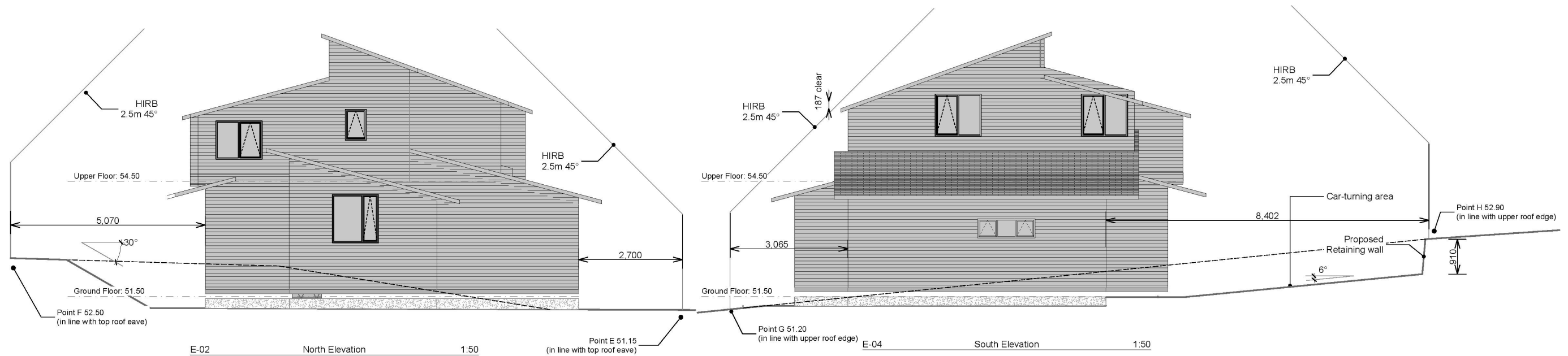


UPPER FLOOR: 75m²



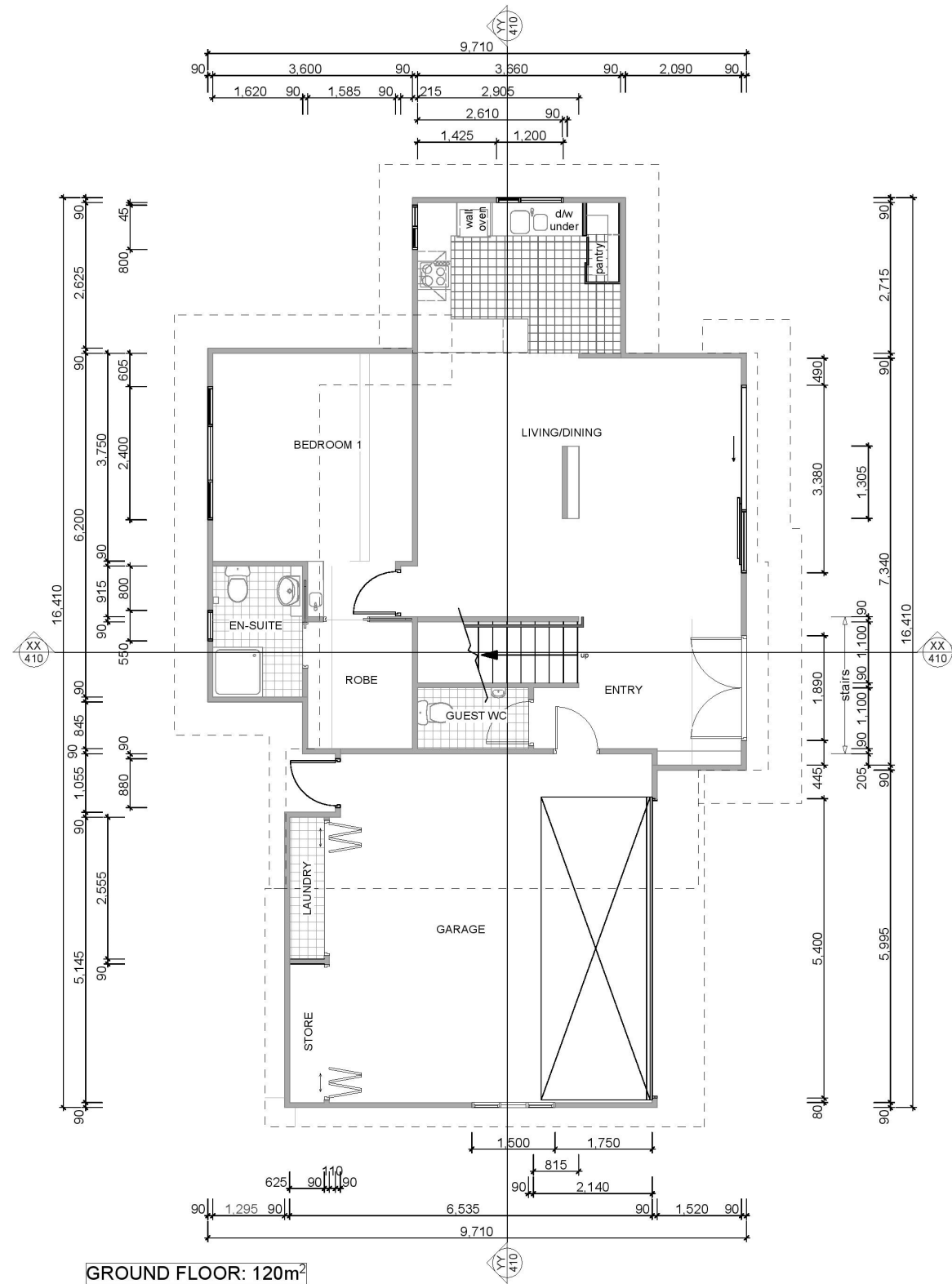
Concept

Floor Plans

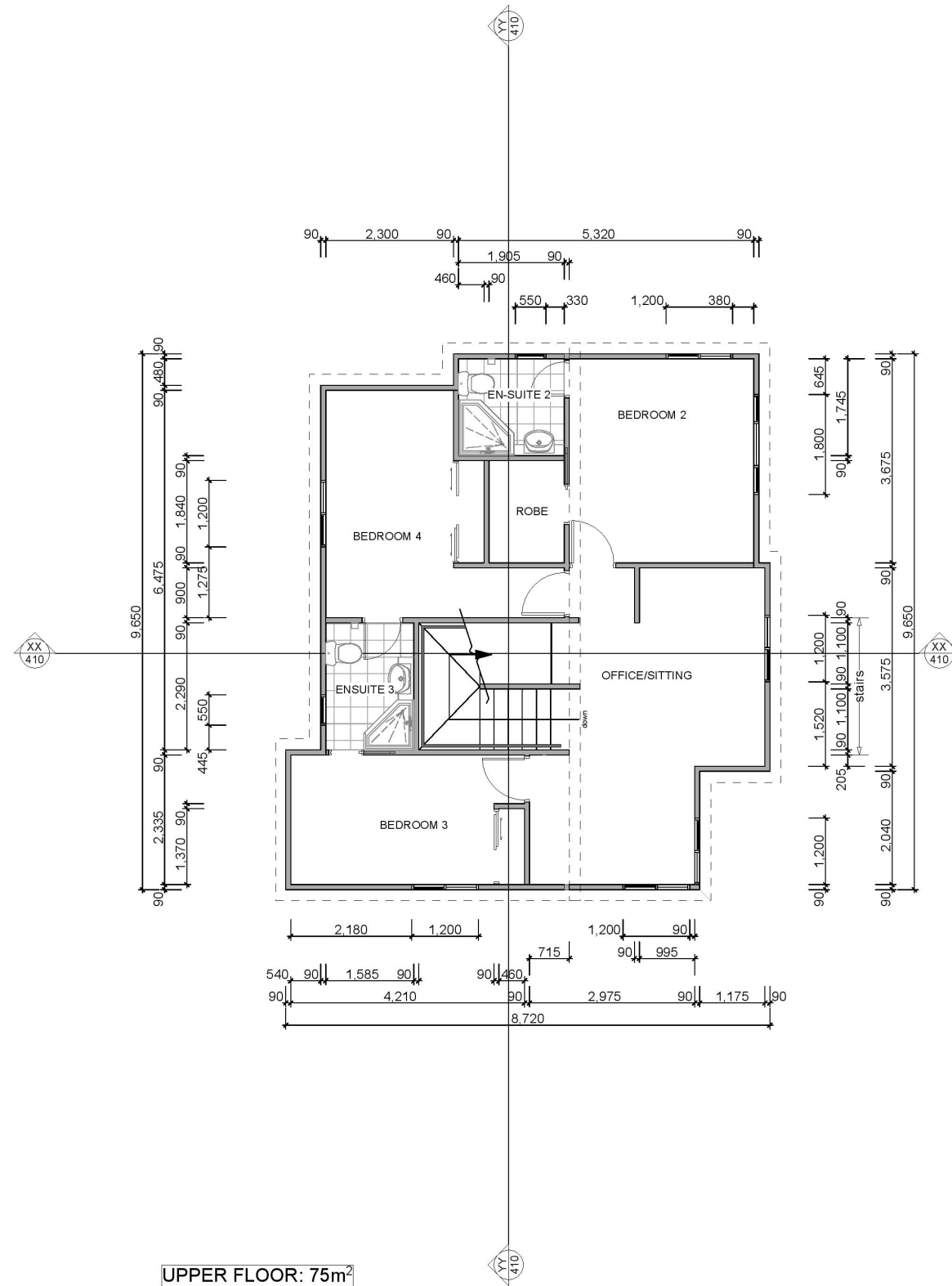


Concept

SHEET
Elevations

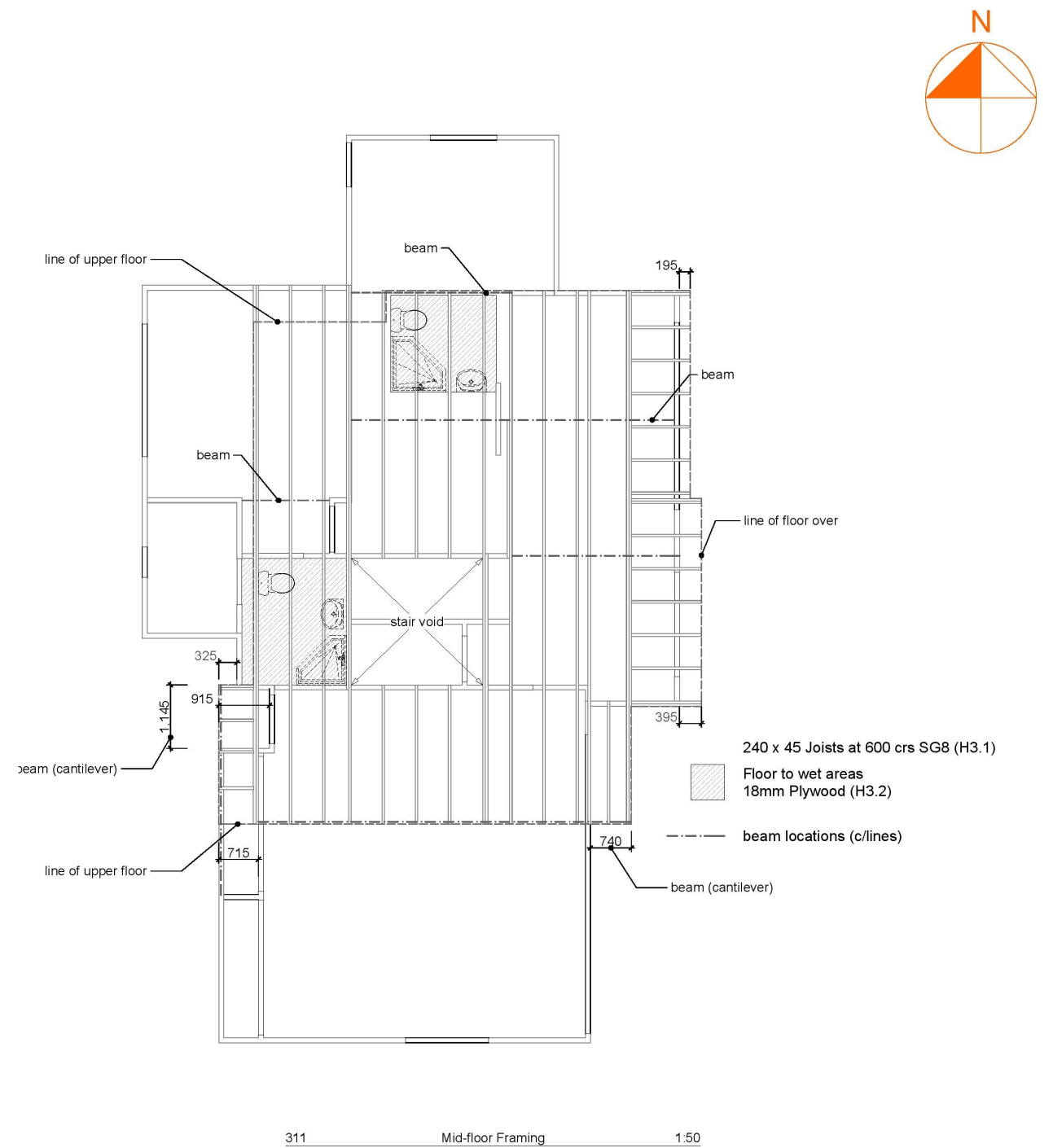
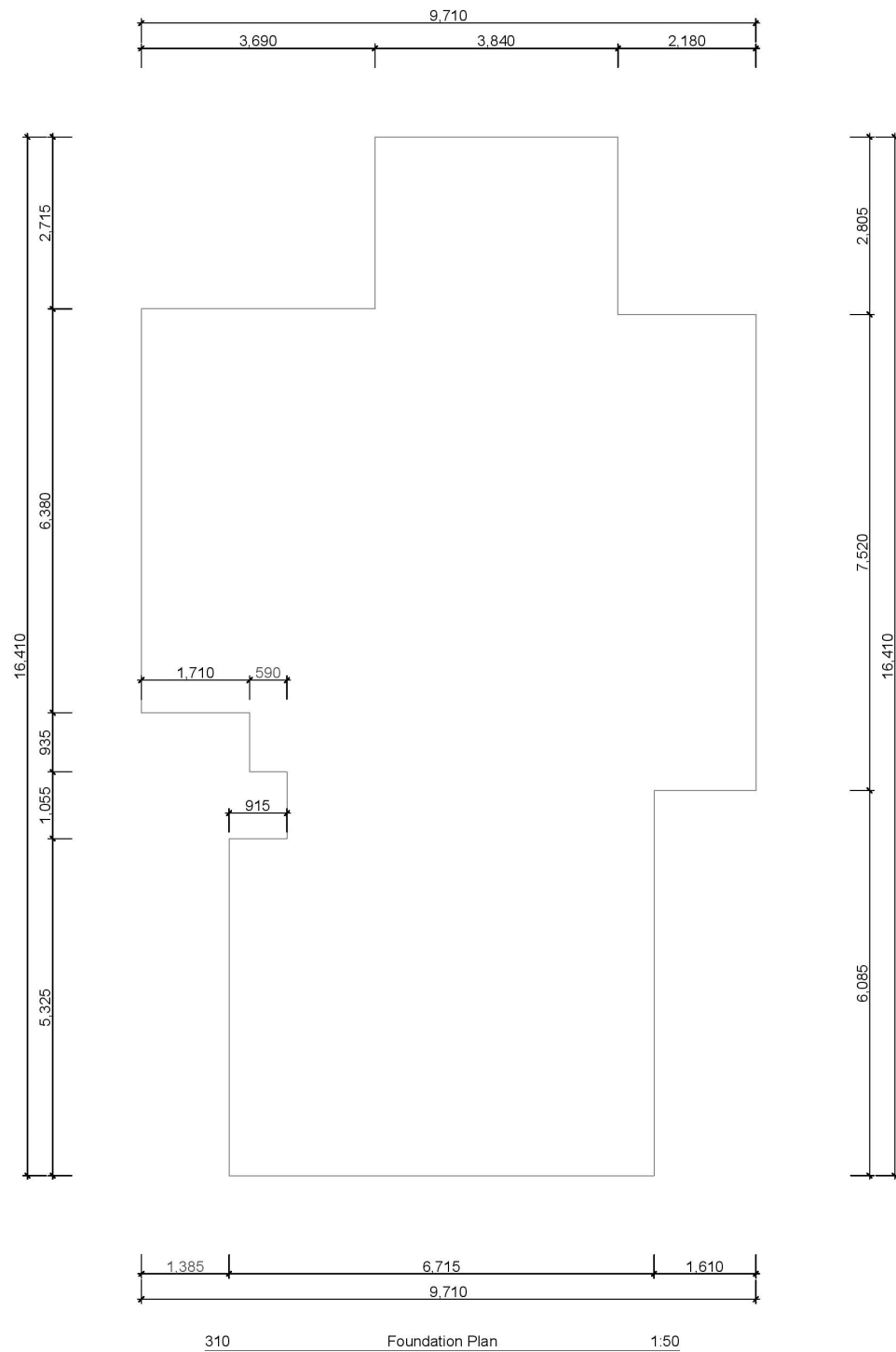


Lot 2 Ground Floor 1:50

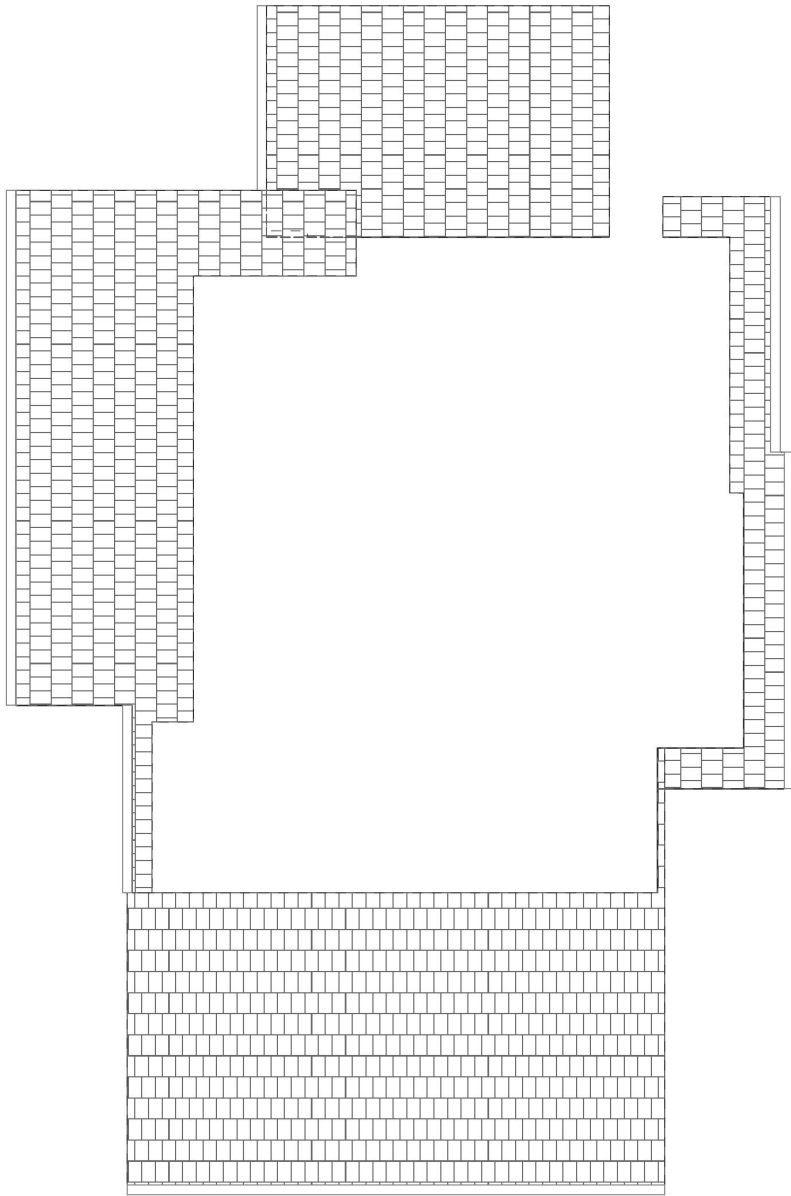


Lot 2 Upper Floor 1:50

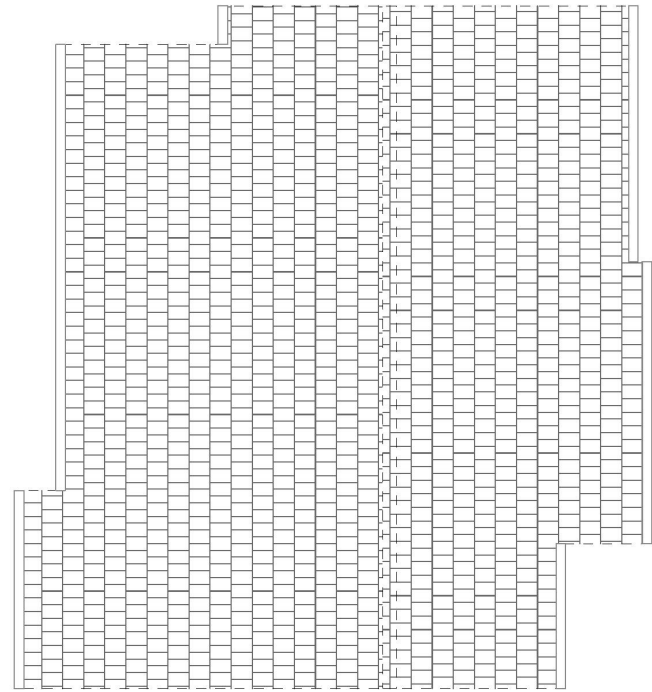
PROJECT	SHEET
New House to Lot 2 of 2-Lot Subdivision at 61 Simpson Road, Ranui	Floor Plans
Milano International (2005) Ltd	



PROJECT	SHEET
New House to Lot 2 of 2-Lot Subdivision at 61 Simpson Road, Ranui	Foundation & Mid Floor Framing Plans
Milano International (2005) Ltd	

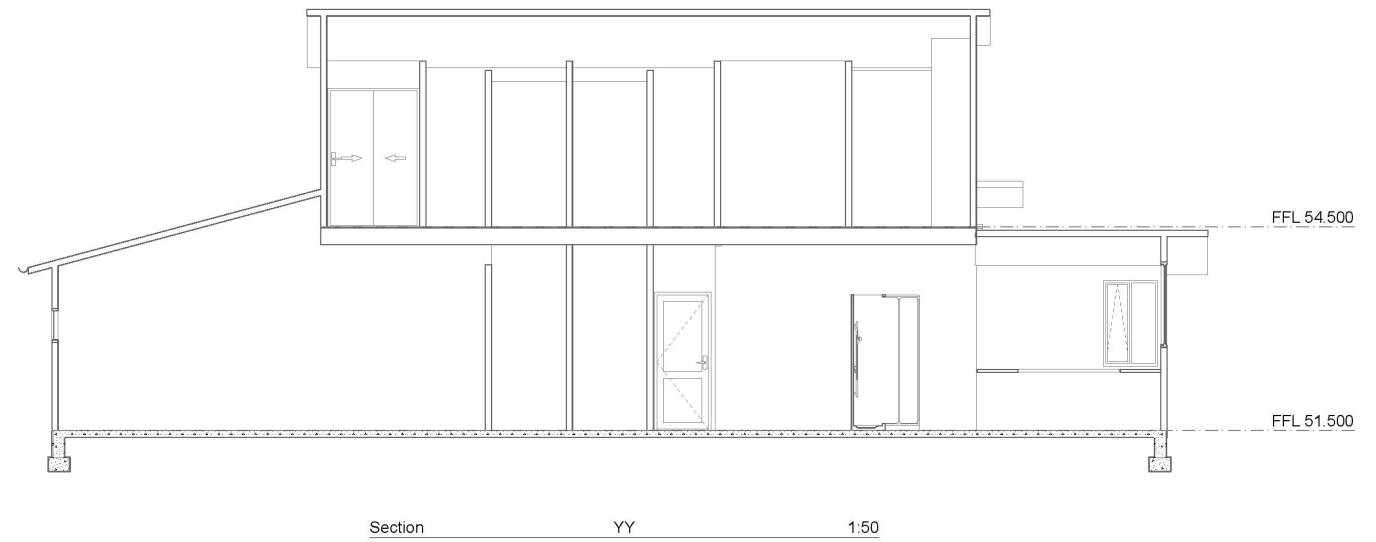
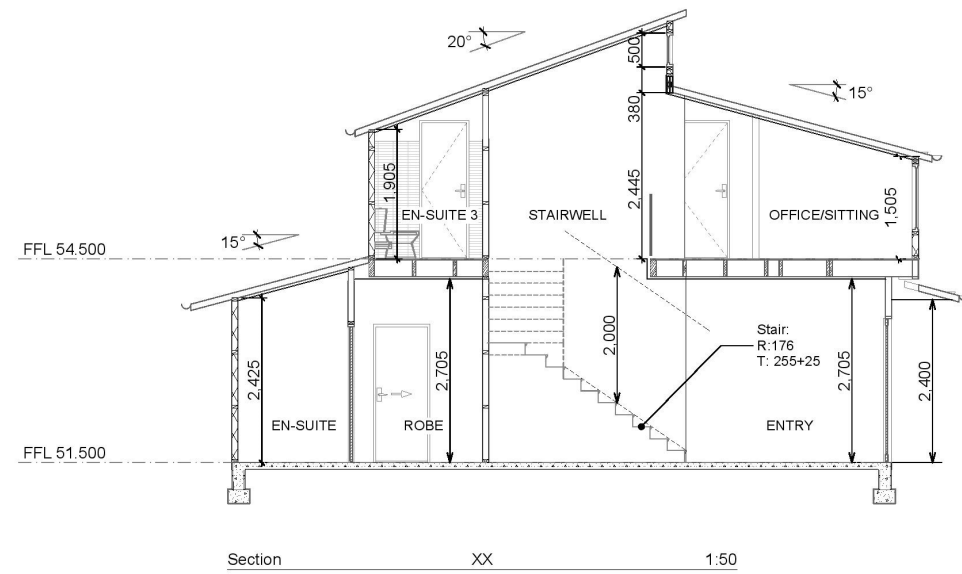


Lower roof plan 1:50



Upper roof plan 1:50

PROJECT	SHEET
New House to Lot 2 of 2-Lot Subdivision at 61 Simpson Road, Ranui	Roof Plans
Milano International (2005) Ltd	



PROJECT	SHEET
New House to Lot 2 of 2-Lot Subdivision at 61 Simpson Road, Ranui	Cross Sections & Details
Milano International (2005) Ltd	